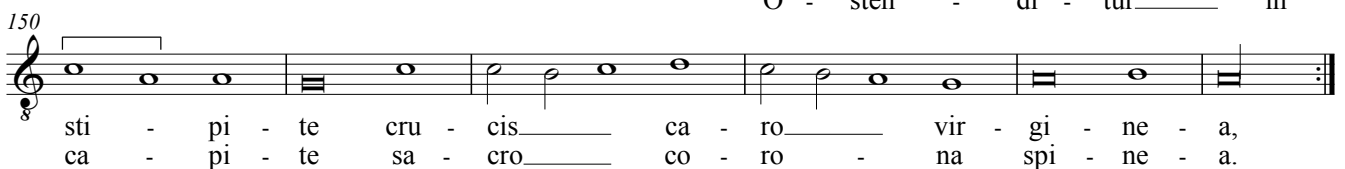
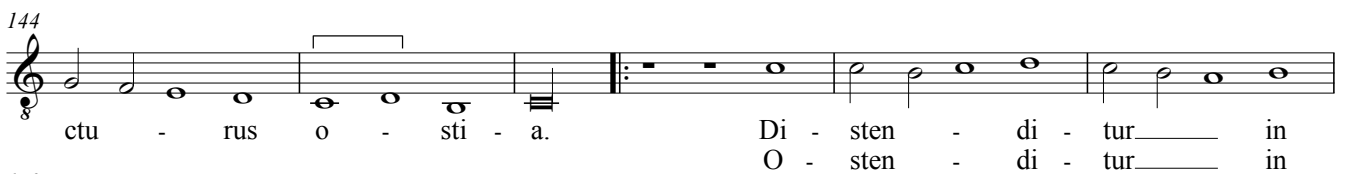
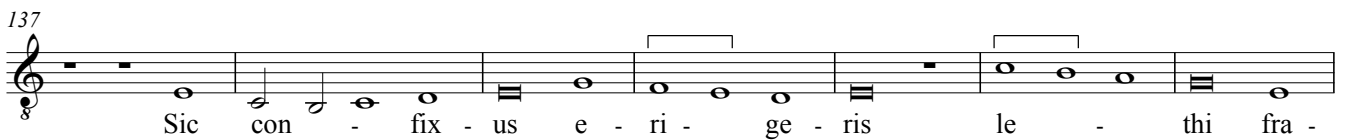
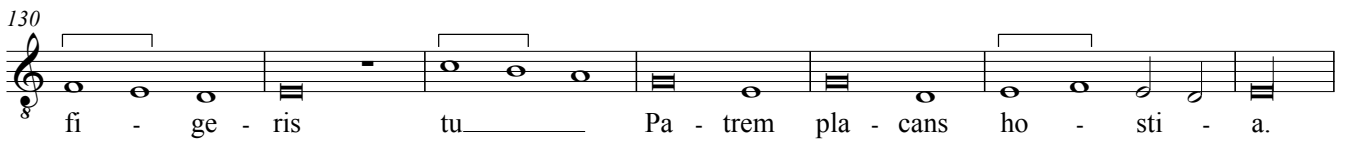
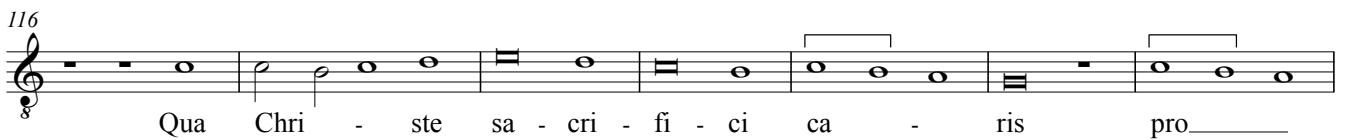
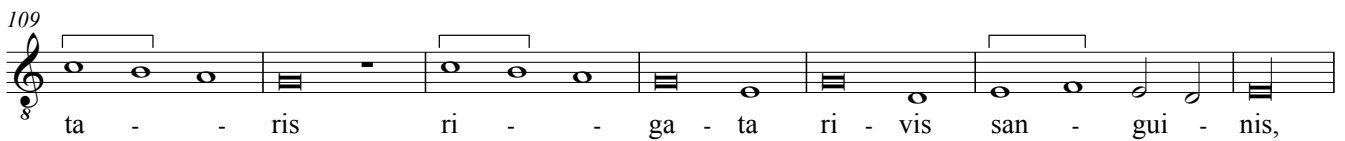
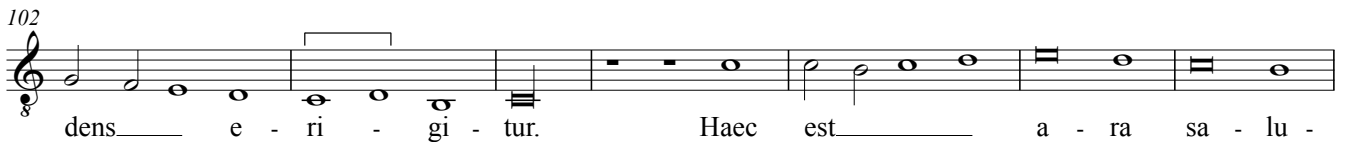
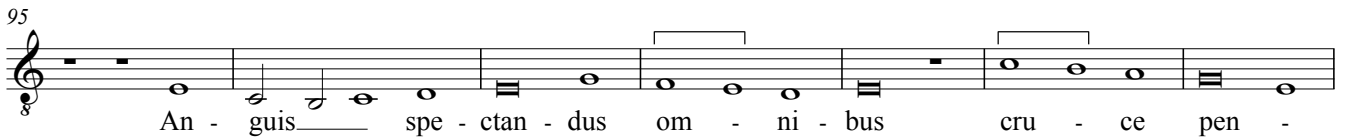
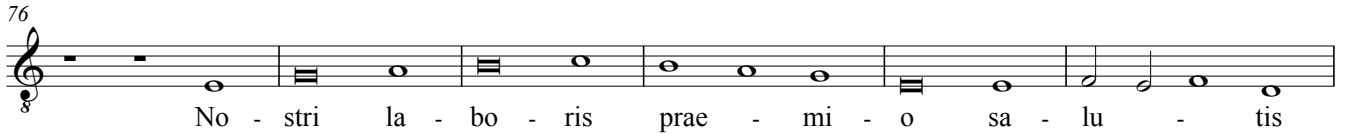


## 25. Autor humani generis


Piae Cantiones 1582


Anonymus


A musical score for a Latin hymn. It consists of ten staves of music, each with a vocal line and a basso continuo line. The music is written in a 3/8 time signature and a key signature of one flat (B-flat). The lyrics are Latin and describe the birth of Jesus Christ. The lyrics are: Au - tor hu - ma - ni - ge - ne - ris pi - e - ta - tis mi - ra - bi - li - con - si - li - o, Pro re - di - men - dis mi - se - ris mor - ti da - tis, su - o non par - cens fi - li - o. Na - tum Ma - ri - a vir - gi - ne mor - ti cru - cis ex - po - su - it, Qui pas - sus si - ne cri - mi - ne ex - sol - vit quae non ra - pu - it. Ful - get cru - cis my - ste - ri - um ae - ter - nae lu - cis spe - cu - lum, Cui sub - di - tur im - pe - ri - um re - cto - rum hu - ius se - cu - li. In Pa - ra - di - si gre - mi - o li - gnum vi - tae pro - du - ctum,




156  
  
 San - guis et un - da pro - flu - it, de fos - si  
 Sic mi - se - ris crux pro - fu - it, quam in - no -


162  
  
 fon - te la - te - ris, Hoc ex - al - ta - tus  
 cen - ter pa - te - ris.


168  
  
 so - li - o ut ad te tra - has om - ni - a.

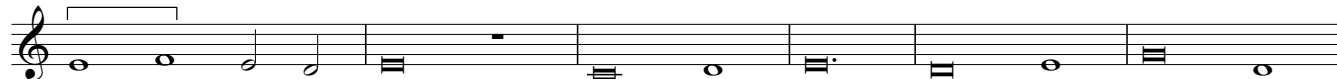
175  
  
 Rix - ae de - stru - cto lo - li - o fers ad am -


182  
  
 plex - us bra - chi - a. Cor ad a - man - dum

188  
  
 a - pe - ris in - cli - nans os ad o - scu - la,

195  
  
 Suf - fers pla - gas dum ca - pe - ris, spu - ta, fla -

202  
  
 gel - la, vin - cu - la. Ma - trem pi - am di -  
 A - ce - ti sump - to

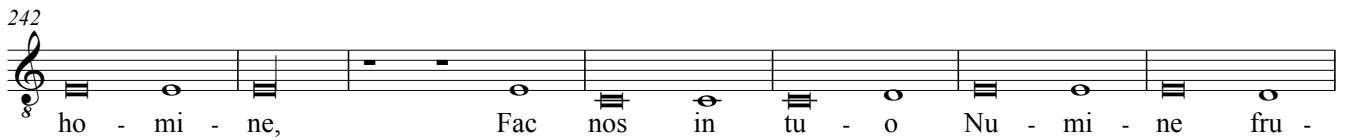
209  
  
 - sci - pu - lo, com - men - dans Pa - tri  
 po - cu - lo car - nis ex - ol - vens

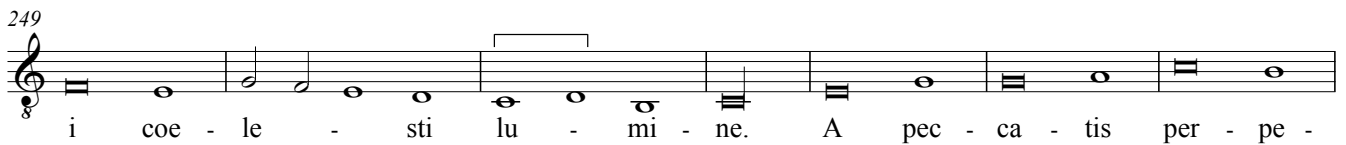
215  
  
 spi - ri - tum, Sic mor - te mor - tem de - stru -  
 de - bi - tum.

221  
  
 is vin - cens in - fer - ni prin - ci - pem, Qui la - tro -

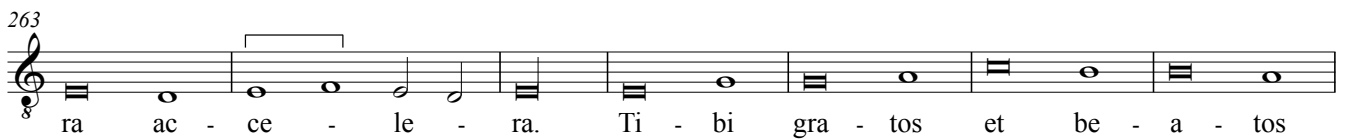
228  
  
 nem in - sti - tu - is tu - i re - gni par - ti - pi - cem,

235  
  
 Suc - cur - re no - bis Do - mi - ne qui pas - sus es pro

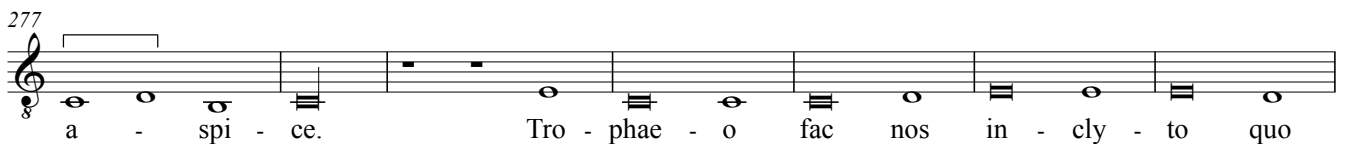
242  
  
 ho - mi - ne, Fac nos in tu - o Nu - mi - ne fru -

249  
  
 i coe - le - sti lu - mi - ne. A pec - ca - tis per - pe -

256  
  
 tra - tis re - os li - be - ra, in - dul - ge - re sce - le -

263  
  
 ra ac - ce - le - ra. Ti - bi gra - tos et be - a - tos

270  
  
 pi - os ef - fi - ce, Vi - tae ve - rae per - fi - ce nos

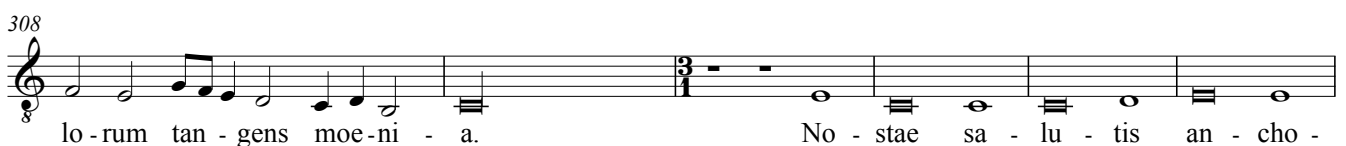
277  
  
 a - spi - ce. Tro - phae - o fac nos in - cly - to quo

284  
  
 su - pe - ras Di - a - bo - lum, Cum Spi - ri - tu pa -

291  
  
 ra - cle - to ho - stem cal - ca - re sub - do - lum.

297  
  
 A - ve crux, tur - ma dux, for - ma poe - ni - ten - ti - ae, tu pec - ca - to - rum ve - ni -

303  
  
 a. In te spes et re - qui - es, nor - ma pa - ti - en - ti - ae, coe -

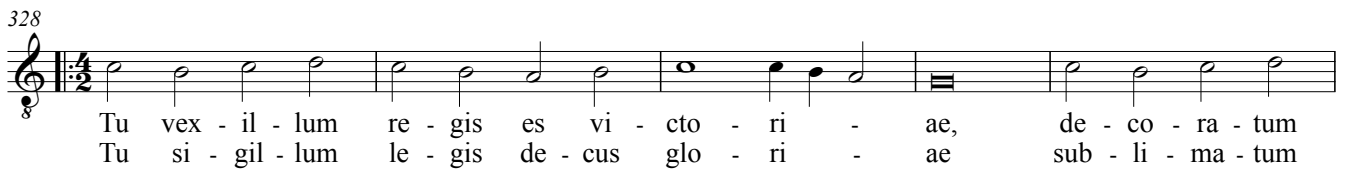
308  
  
 lo - rum tan - gens moe - ni - a. No - stae sa - lu - tis an - cho -

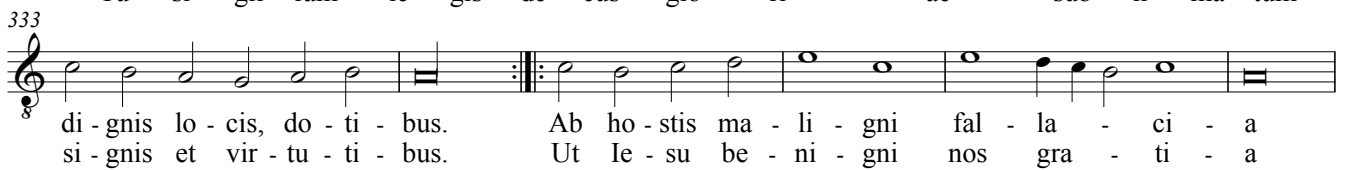
314  

 ra, tu por - tus in nau - fra - gi - o, Qui mun - di

321  

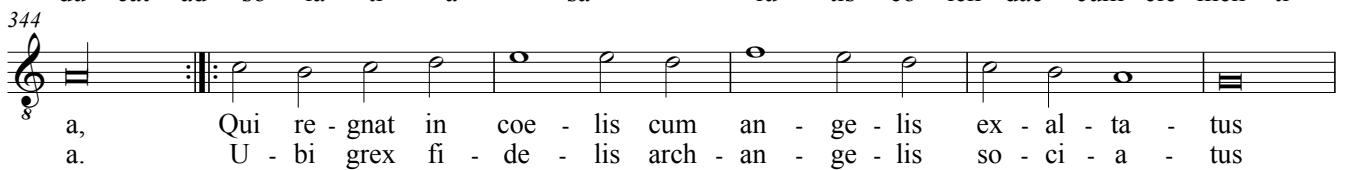
 pla - cas ae - quo - ra, pa - cis da - to — suf - fra - gi - o.

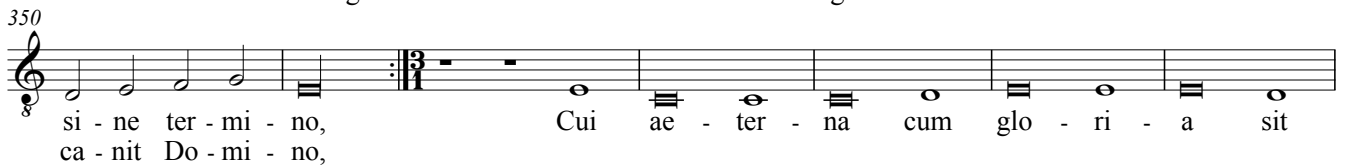
328  

 Tu vex - il - lum re - gis es vi - cto - ri - ae, de - co - ra - tum  
 Tu si - gil - lum le - gis de - cus glo - ri - ae sub - li - ma - tum

333  

 di - gnis lo - cis, do - ti - bus. Ab ho - stis ma - li - gni fal - la - ci - a  
 si - gnis et vir - tu - ti - bus. Ut Ie - su be - ni - gni nos gra - ti - a

339  

 at - que per - vi - ca - ci - a vir - tu - tis de - fen - de nos po - ten - ti -  
 du - cat ad so - la - ti - a sa - lu - tis co - len - dae cum cle - men - ti -

344  

 a, Qui re - gnat in coe - lis cum an - ge - lis ex - al - ta - tus  
 a. U - bi grex fi - de - lis arch - an - ge - lis so - ci - a - tus

350  

 si - ne ter - mi - no, Cui ae - ter - na cum glo - ri - a sit  
 ca - nit Do - mi - no,

357  

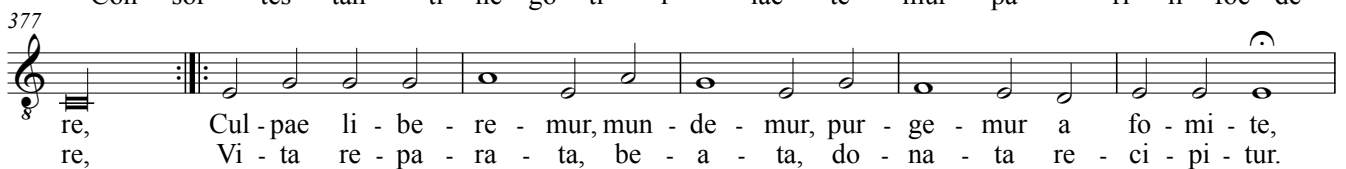
 laus cun - cto - rum se - du - la, Pro su - per - na vi -

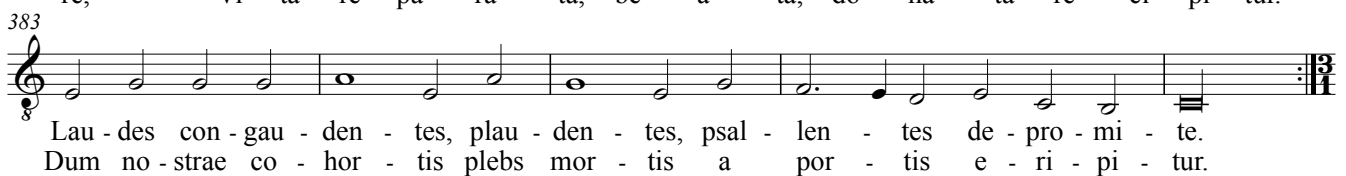
364  

 cto - ri - a in se - cu - lo - rum se - cu - la.

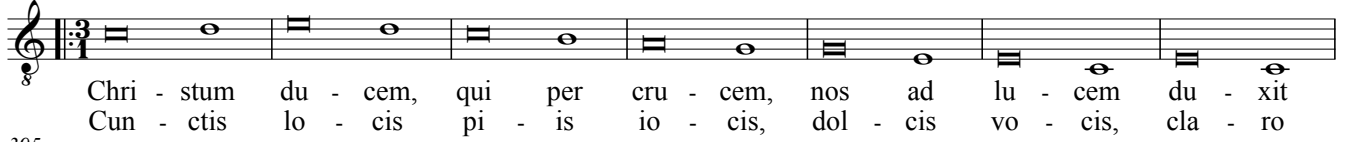
370  

 Can - ta - te can - ti - ca so - ci - i cru - cis si - gna - ti cha - ra - cte -  
 Con - sor - tes tan - ti ne - go - ti - i lae - te - mur pa - ri - li foe - de -

377  

 re, Cul - pae li - be - re - mur, mun - de - mur, pur - ge - mur a fo - mi - te,  
 re, Vi - ta re - pa - ra - ta, be - a - ta, do - na - ta re - ci - pi - tur.

383  

 Lau - des con - gau - den - tes, plau - den - tes, psal - len - tes de - pro - mi - te.  
 Dum no - strae co - hor - tis plebs mor - tis a por - tis e - ri - pi - tur.

388



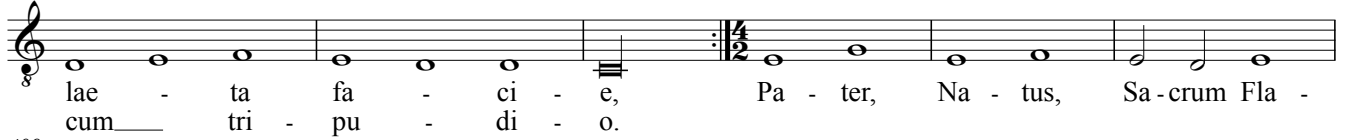
Chri - stum du - cem, qui per cru - cem, nos ad lu - cem du - xit  
Cun - ctis lo - cis pi - is io - cis, dol - cis vo - cis, cla - ro

395




gra - ti - ae, Ve - ne - re - mur, i - mi - te - mur, gra - tu - le - mur  
stu - di - o Per - so - ne - mus, de - can - te - mus, iu - bi - le - mus

403



lae - ta fa - ci - e, Pa - ter, Na - tus, Sa - crum Fla -  
cum tri - pu - di - o.

409



men, det no - bis spem et so - la - men, Nos ve - ni - ens

415



ad ex - a - men Chri - stus I - dex sal - vet, A - - - men.